



S|D|R|C

San Diego Regional Center

Transition Services Overview

- Individual Placement
- Group Employment
- Paid Internship Program
- Tailored Day Services
- Day Programs
- Self-Determination Program
- Questions



San Diego
Regional Center

SERVING PEOPLE WITH DEVELOPMENTAL DISABILITIES IN SAN DIEGO & IMPERIAL COUNTIES

Individual Placement

- This service is at a 1:1 ratio.
- Department of Rehabilitation (DOR) and SDRC collaborate to support individuals in Supported Employment.
- DOR provides initial support and funding.
- Individuals transfer to SDRC funding if they can reach stabilization (around 20% job coaching intervention level).
- Individuals should be able to independently transport or have other reliable means of transportation.



Group Employment

- Job coach needs to be present during shift.
- This is a good option for individuals that want to work part time or require work experience.
- The hours vary by work site but average around 20 hours per week.
- Individuals must be paid minimum wage or higher.
- SDRC is no longer vendoring Work Activity Programs (subminimum wage work).



Paid Internship Program

- The purpose of the paid internship program is to increase the vocational skills and abilities of consumers who choose, through the Individual Program Plan (IPP) process, to participate in a paid internship.
- The goals of the program include the acquisition of experience and skills for future paid employment, or for the internship itself to lead to full or part-time employment in the same job. **W&I Code Section 4870**
- PIP's are predicated on the person-centered planning process.
- Placements shall be made into competitive integrated work environments.
- SDRC is responsible for paying the wages, payroll costs and job coaching supports if necessary.
- PIP's are a time-limited service.



Tailored Day Services

- This service is at a 1:1 ratio.
- Provides opportunities for participants to choose and customize day services to meet their individualized needs.
- Common goals under TDS include community integration, postsecondary education, volunteering, employment supports and PIP's.
- Flexibility to have multiple services through IPP planning team decision.



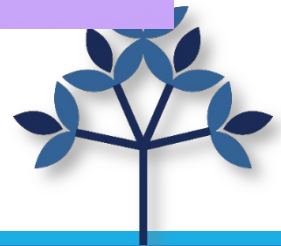
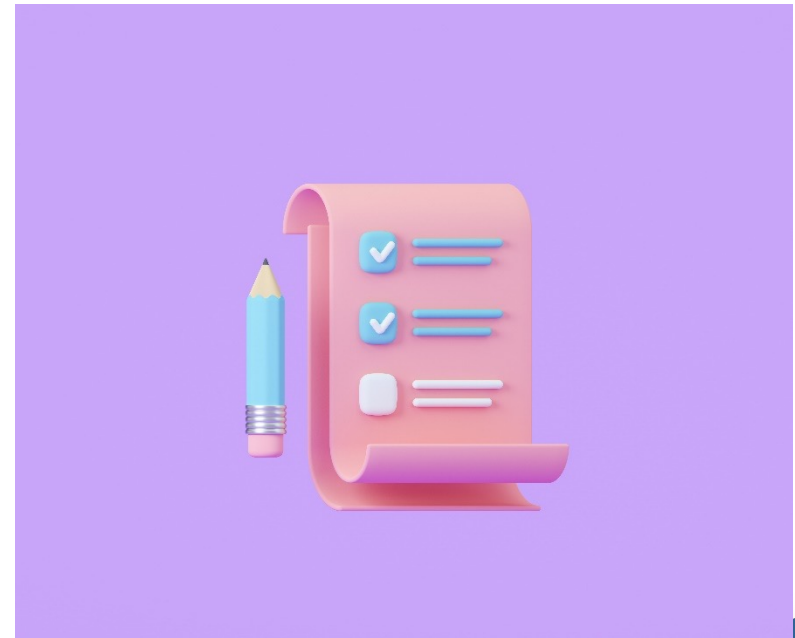
Day Programs

- Community-based programs are appropriate for individuals that have the stamina and can manage their own self-care needs.
- Site-based day programs are licensed by Community Care Licensing. These programs can provide assistance with medications and self-care needs.
- Behavior management programs have additional requirements that must be in place (example: behavior intervention plans and staff behavior training).
- Individuals in day programs can discuss alternative options if they want a less restrictive environment (example: group employment, individual placement or TDS).
- SDRC also has several look-alike programs. Most look-alike programs are time-limited.



Self-Determination Program

- Self-Determination is a new way to imagine, plan, and live your life. It offers more authority over what services you buy, what those services look like and how much you pay for them.
- Whether you decide to use regional center providers or find your own, Self-Determination means you are in the driver's seat.
- For more information please visit: <https://www.sdrc.org/sdp>





Contact Information

Please contact your service coordinator for additional questions about programs.

For questions about the Paid Internship Program please contact Paul Quinones at paul.quinones@sdrc.org

Questions

